



SKE

# SKE Yacht

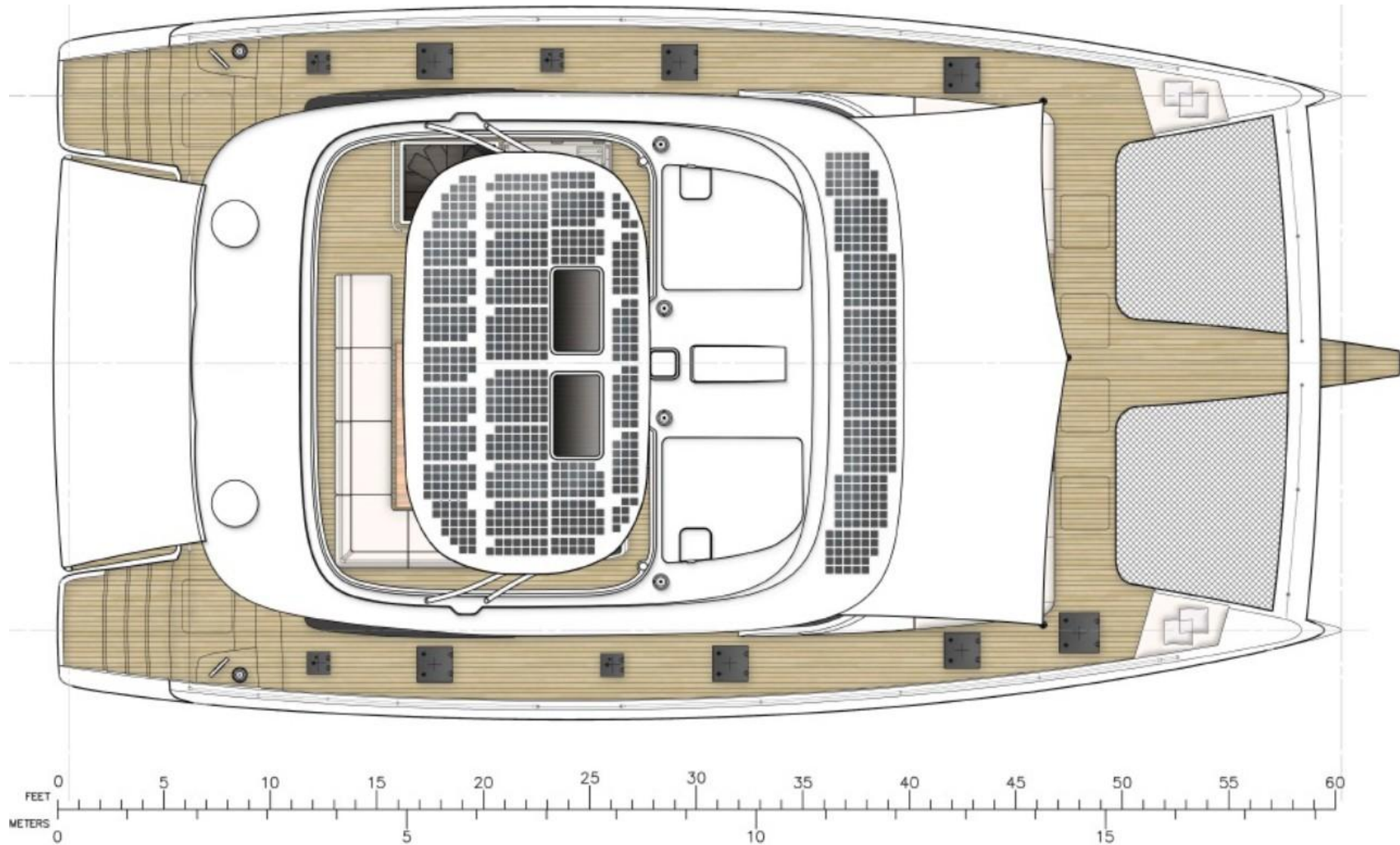






SKE

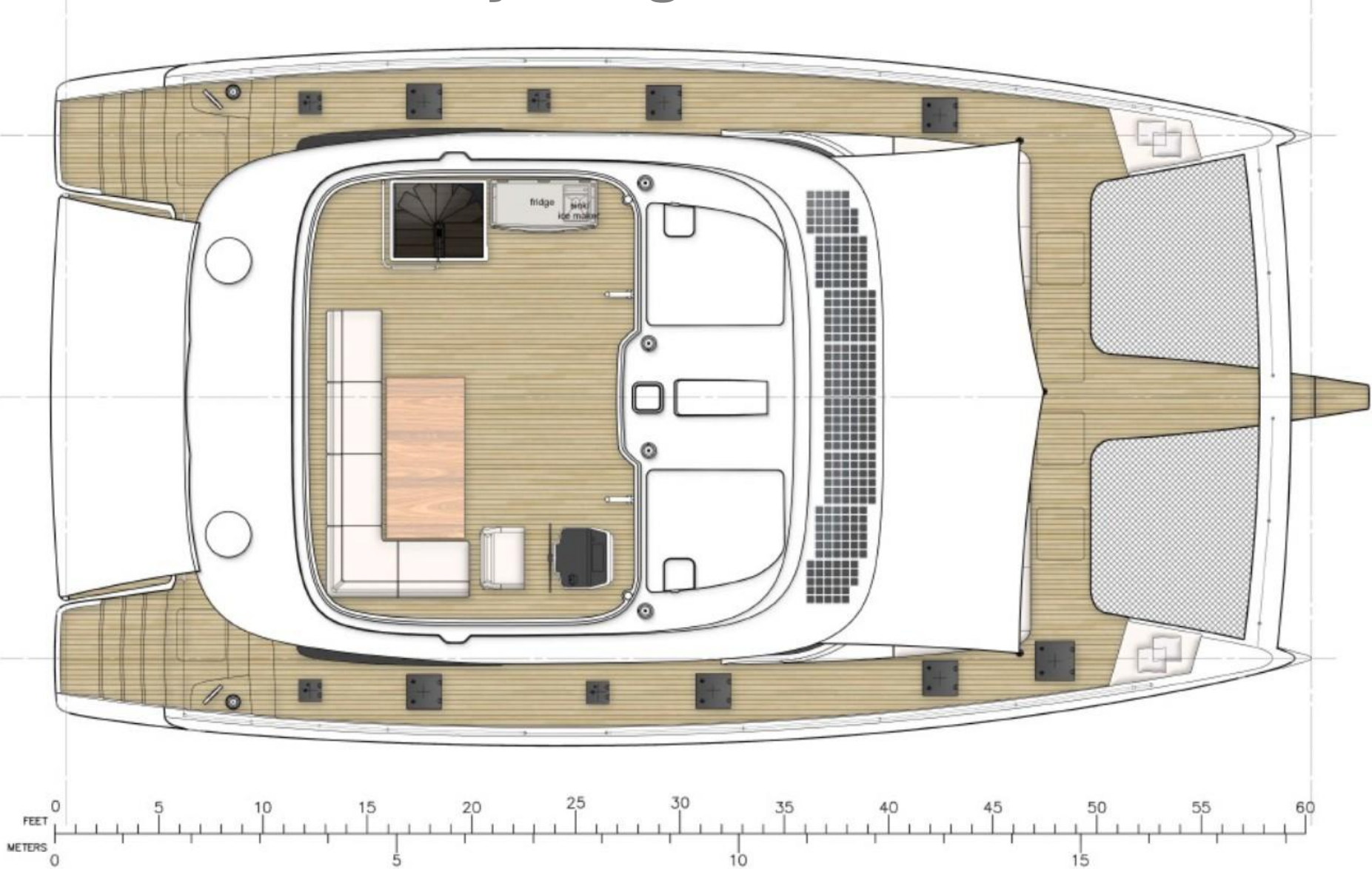
## Bimini





SKE

# Fly Bridge







**SKE**



**Fly Bridge - Port**

**Fly Bridge - Starboard**





SKE

# Main Deck







SKE



## Main Deck - Cockpit





SKE

## Main Deck – Front Terrace







**SKE**



**Main Deck – Saloon  
Back**

**Main Deck – Saloon  
Forward**



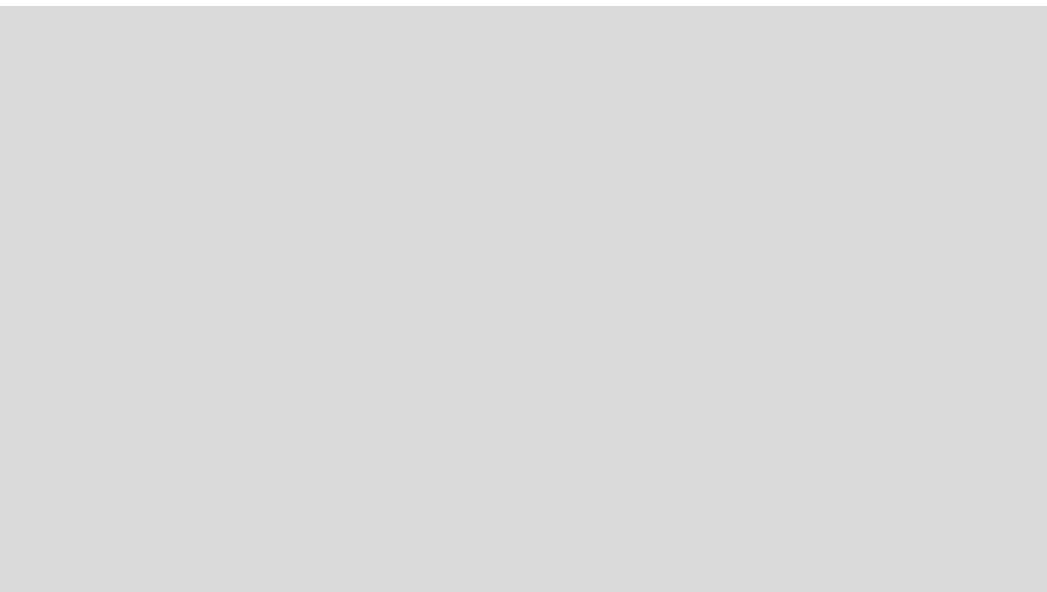




SKE



## Main Deck – Saloon Sides





# Lower Deck







**SKE**



**Lower Deck – Master  
Bedroom**

**Lower Deck – Master  
Cabin Dressing Area**





**SKE**



## Lower Deck – Master Cabin Closets

## Lower Deck – Master Cabin Office Area



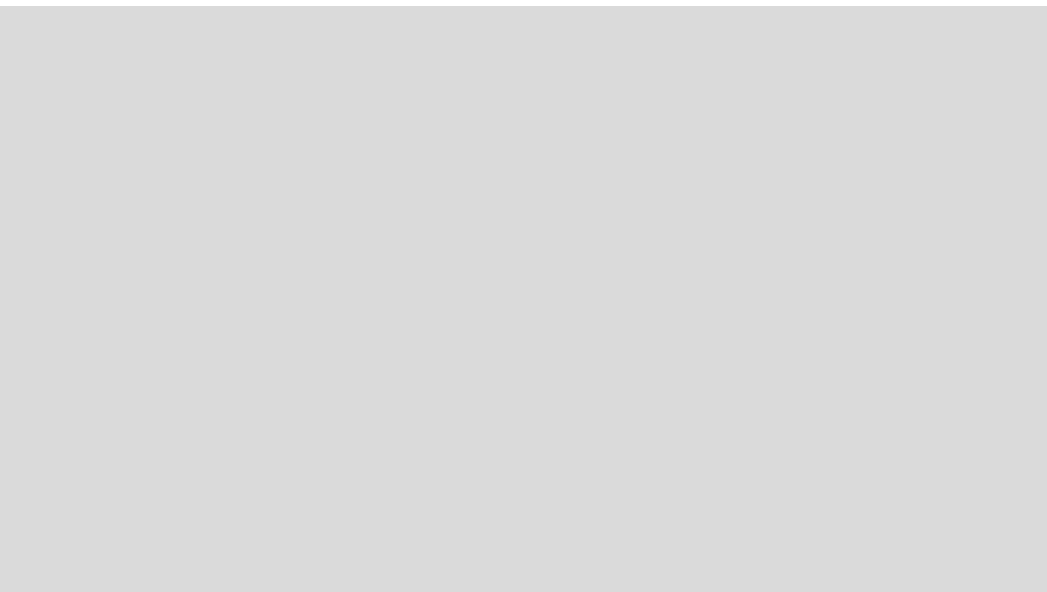




SKE



## Lower Deck – Master Cabin Bathroom

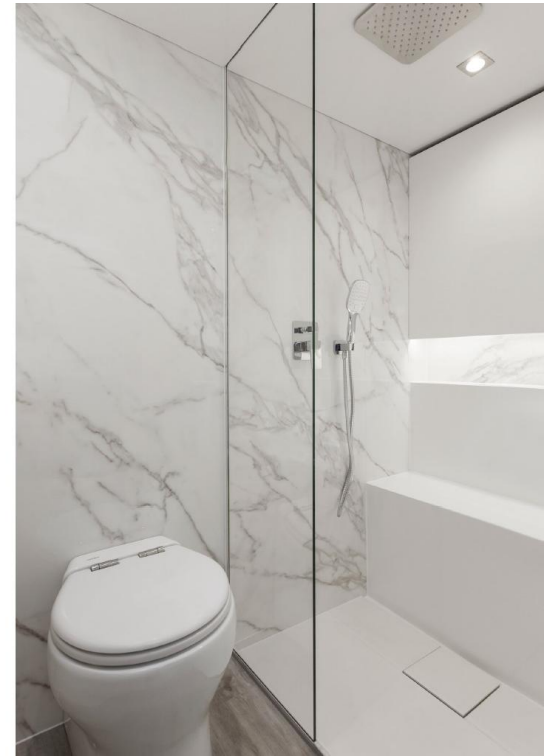
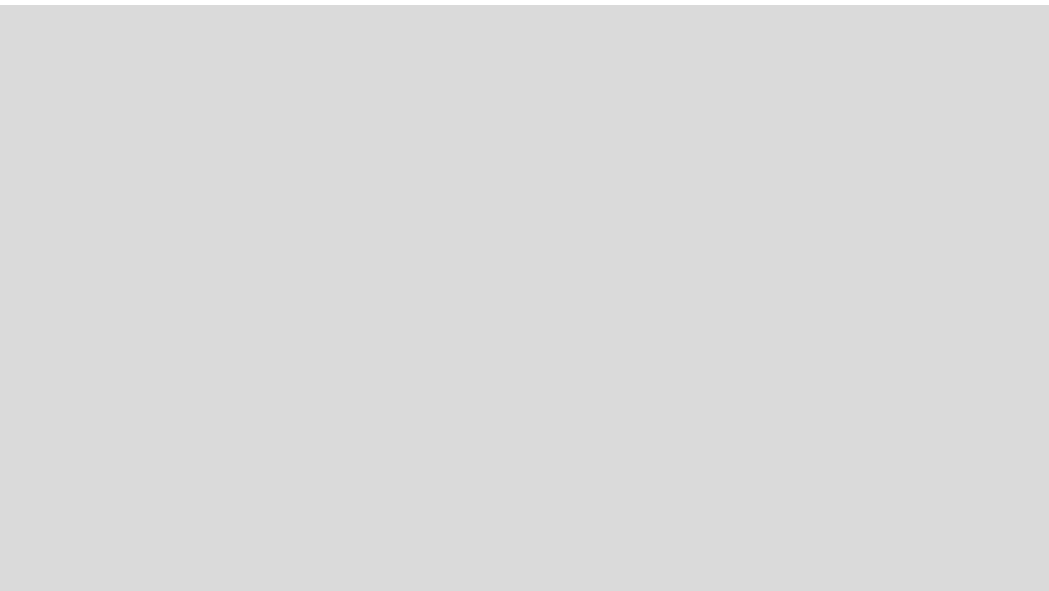




SKE



## Lower Deck – Guest Cabins





# Key Specs



**Registry**  
Cayman Island



**Builder**  
Sunreef Ventures S.A.  
(Gdansk, Poland)



**Model**  
Sunreef 60 Sailing  
Catamaran



**Year Built**  
2023



**Length Overall**  
60 ft / 19.22 m



**Beam**  
10.20 m



**Draft**  
2.32 m



**Displacement**  
66 tons



**Engines**  
Twin Diesel Volvo Penta  
D3 – 150 hp



**Fuel Capacity**  
2x 875 L tanks + 2x 950 L+  
fuel bladders



**Water Capacity**  
800 L tank



**Navigation**  
Raymarine Navigation



**Solar Power**  
5.2 kWp



**Voltage AC / DC**  
230V, 50 Hz, 110V 60Hz



**Batteries**  
24V and 12V DC



**Cabins**  
4 Cabins



**Water Makers**  
Blue Water Legend 1850-2  
Compact (280 L/h) and Express  
XT 600 (95 L/h).



**Generators**  
Cummins main generator  
19KVA, 50Hz, 230V and a  
Cummins second generator  
11KVA, 50Hz 230V



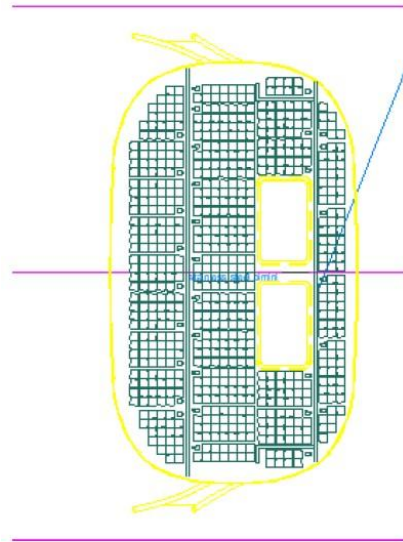
**Heads**  
4 full washrooms with  
freshwater toilets and showers,  
master with a bidet



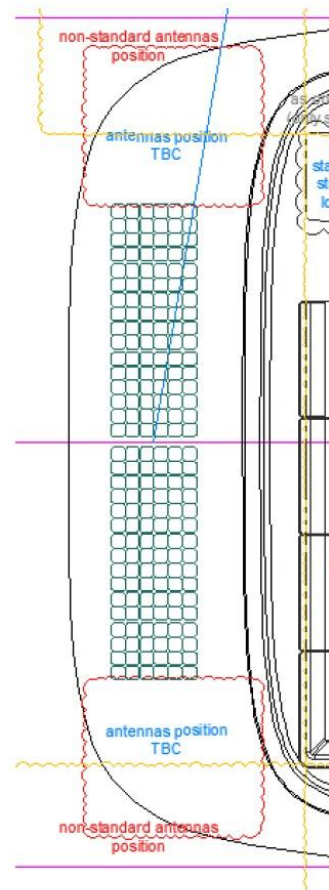
**Tender**  
Highfield CL460 Arctic Orca  
with Honda BF 80 Hp engine

## Solar Array – Bimini and Fly Bridge

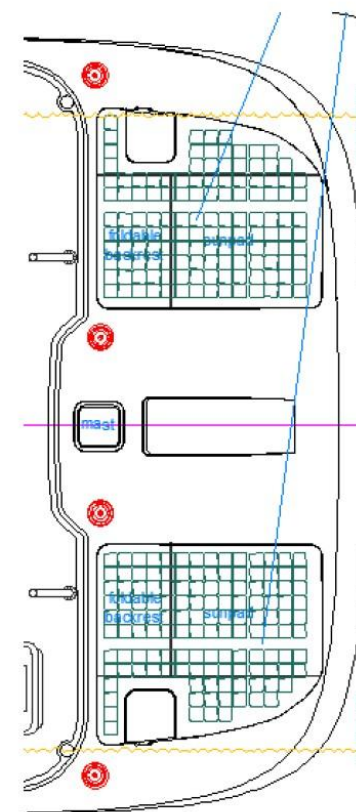
BIMINI  
2,54 kWp



FLY BACK  
0,72 kWp



FLY SUNPAD  
0,99 kWp



FLY FRONT  
1,02 kWp

